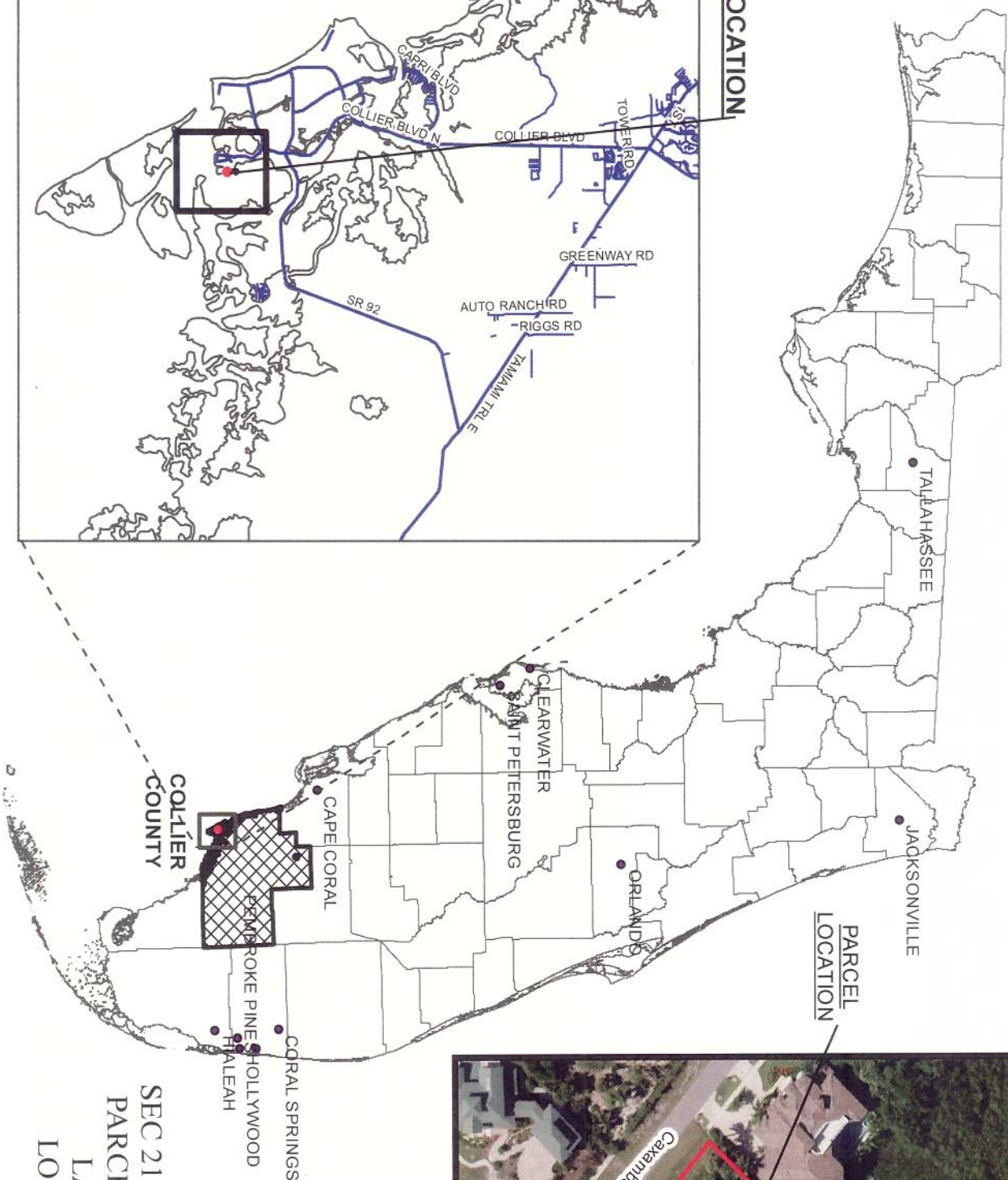
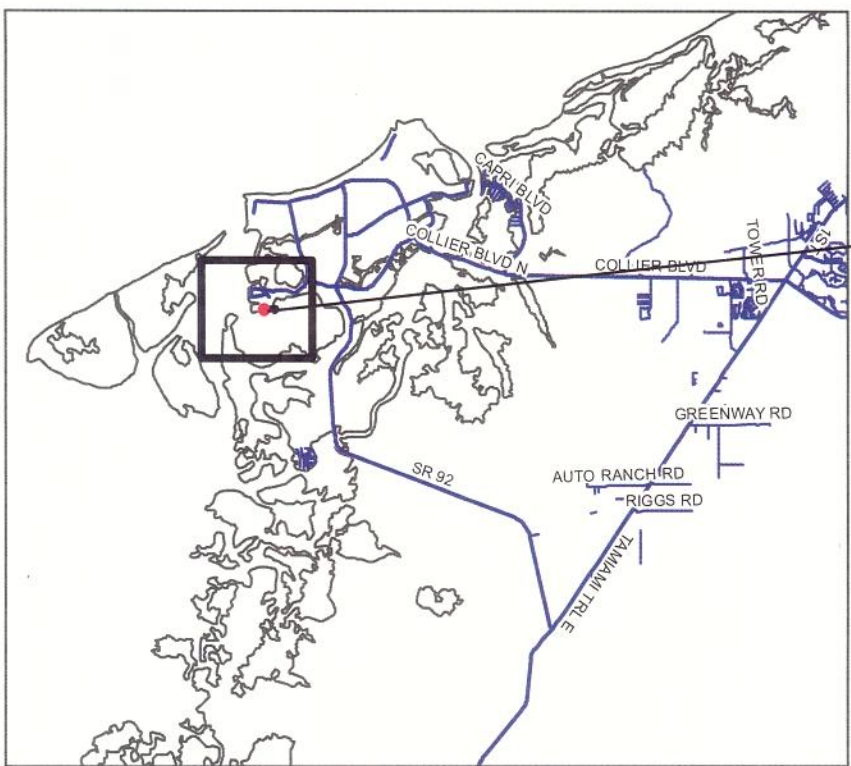


PARCEL LOCATION



SEC 21 - TSP 52S - RGE 26E
 PARCEL NO. 58106280006
 LAT: 25° 54' 47"N
 LONG: 81° 41' 34"W

929 Caxambas Dr
 Collier County, Florida



EARTH TECH ENVIRONMENTAL, LLC
 1455 RAIL HEAD BLVD, SUITE 8
 NAPLES, FLORIDA 34110
 PHONE (239) 304-0030 FAX (239) 324-0054



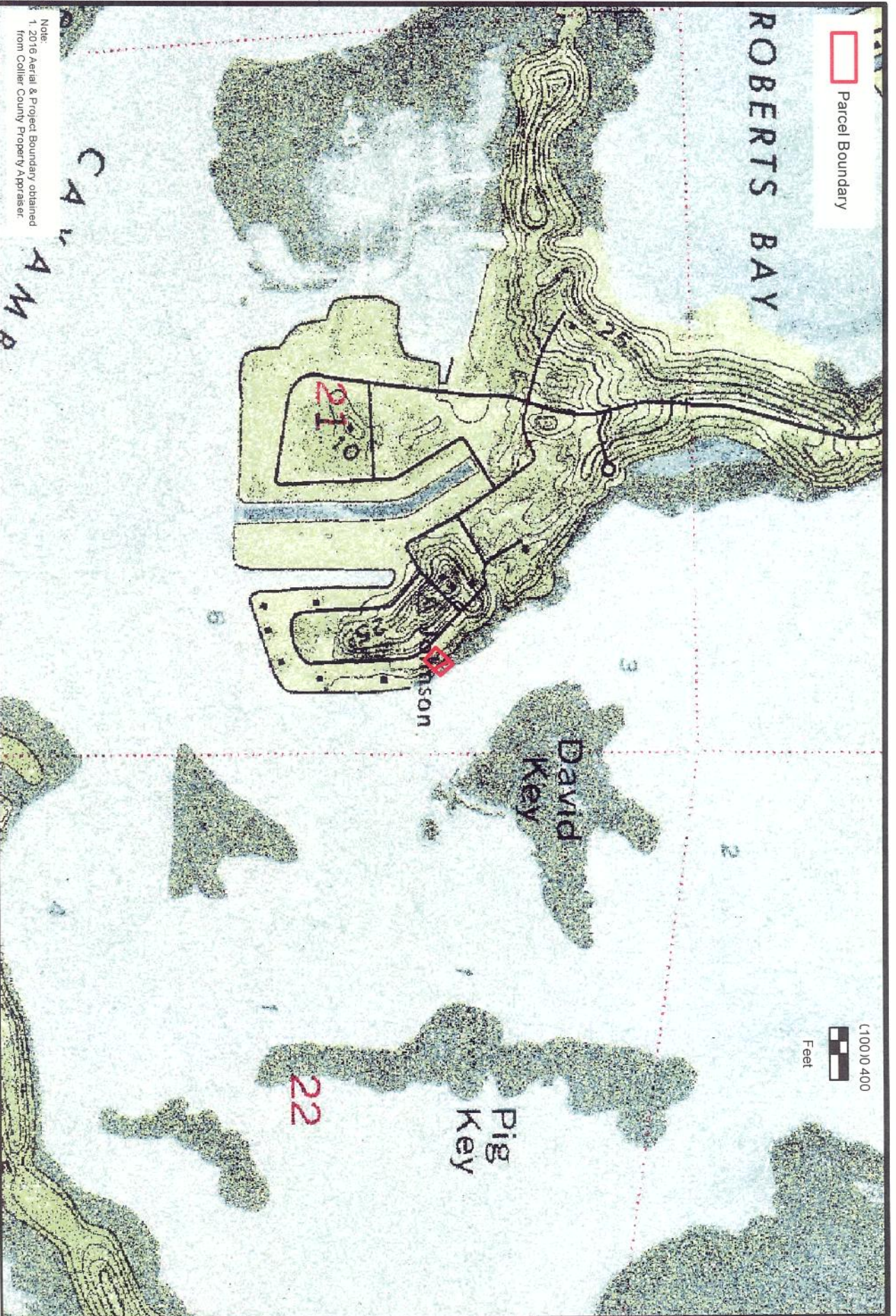
SHEET NO.

DATE
 11/22/16

PROJECT NO.
 N/A

SCALE
 N/A

LOCATION MAP



Parcel Boundary

1:100,000
Feet

Note:
1. 2016 Aerial & Project Boundary obtained
from Collier County Property Appraiser.

929 Caxambas Dr
Collier County, Florida



EARTH TECH ENVIRONMENTAL, LLC
1455 RAIL HEAD BLVD SUITE 8
NAPLES, FLORIDA 34110
PHONE (239) 304-0030 FAX (239) 324-0054



SHEET NO.
X

DATE
11/22/2016

PROJECT NO.
N/A

USGS Quad Map

SCALE
AS SHOWN



Parcel Boundary

Note:
1. 2016 Aerial & Project Boundary obtained
from Collier County Property Appraiser.

929 Caxambas Dr
Collier County, Florida



EARTH TECH ENVIRONMENTAL, LLC
1455 RAIL HEAD BLVD., SUITE 8
NAPLES, FLORIDA 34110
PHONE (239) 304-0030 FAX (239) 324-0054



SHEET NO.
X

DATE
11/22/2016

PROJECT NO.
N/A

SCALE
AS SHOWN

Aerial Map





Parcel Boundary

FLUCCS Mapping

- 428, Cabbage Palm
- 540, Bays and Estuaries
- 612, Mangrove Forest
- 617, Mixed Wetland Hardwoods

Note:
1 2016 Aerial & Project Boundary obtained
from Collier County Property Appraiser.

929 Caxambas Dr
Collier County, Florida



EARTH TECH ENVIRONMENTAL, LLC
1455 RAIL HEAD BLVD., SUITE 8
NAPLES, FLORIDA 34110
PHONE (239) 304-0030 FAX (239) 324-0054



SHEET NO.
X

DATE
11/22/2016

PROJECT NO.
N/A

FLUCCS Map

SCALE
AS SHOWN



Note:
1. 2016 Aerial & Project Boundary obtained from Collier County Property Appraiser.
2. RBNERR - Rookery Bay National Estuarine Research Reserve.

929 Caxambas Dr
Collier County, Florida



EARTH TECH ENVIRONMENTAL, LLC
1455 RAIL HEAD BLVD., SUITE 8
NAPLES, FLORIDA 34110
PHONE (239) 304-0030 FAX (239) 324-0054

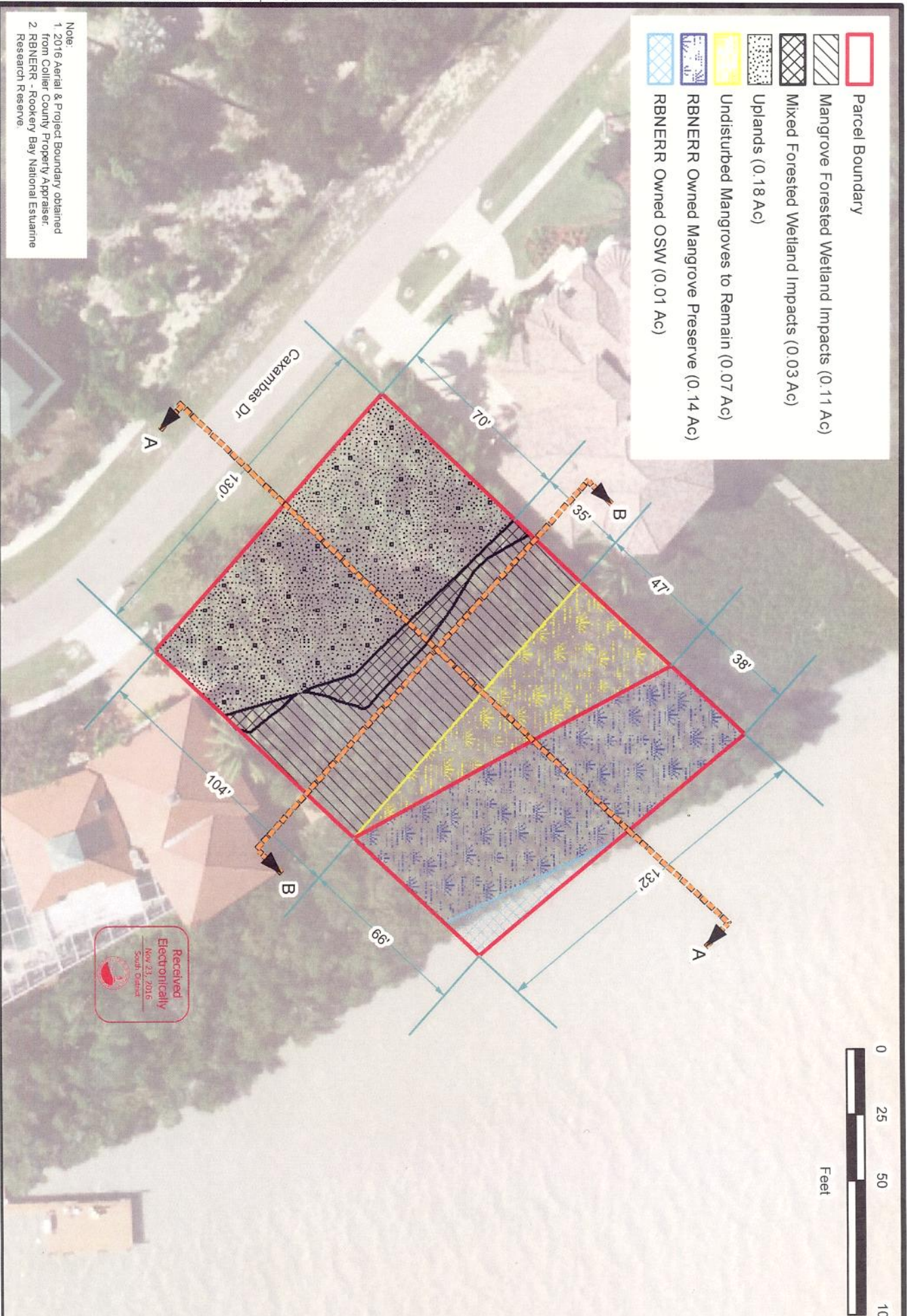


SHEET NO. X
DATE 11/22/2016

PROJECT NO. N/A
SCALE AS SHOWN

Impact Site Plan

- Parcel Boundary
- Mangrove Forested Wetland Impacts (0.11 Ac)
- Mixed Forested Wetland Impacts (0.03 Ac)
- Uplands (0.18 Ac)
- Undisturbed Mangroves to Remain (0.07 Ac)
- RBNERR Owned Mangrove Preserve (0.14 Ac)
- RBNERR Owned OSW (0.01 Ac)



929 Caxambas Dr
Collier County, Florida



EARTH TECH ENVIRONMENTAL, LLC
1456 RAIL HEAD BLVD., SUITE 8
NAPLES, FLORIDA 34110
PHONE (239) 304-0030 FAX (239) 324-0054

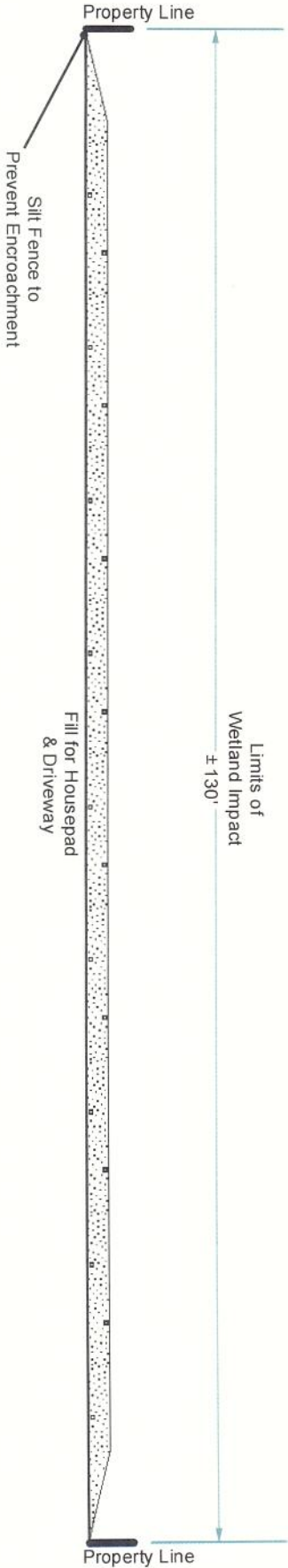


DATE
11/22/2016

Cross Sections
PROJECT NO.
N/A

SCALE
NTS

CROSS SECTION # B-B



CROSS SECTION # A-A

